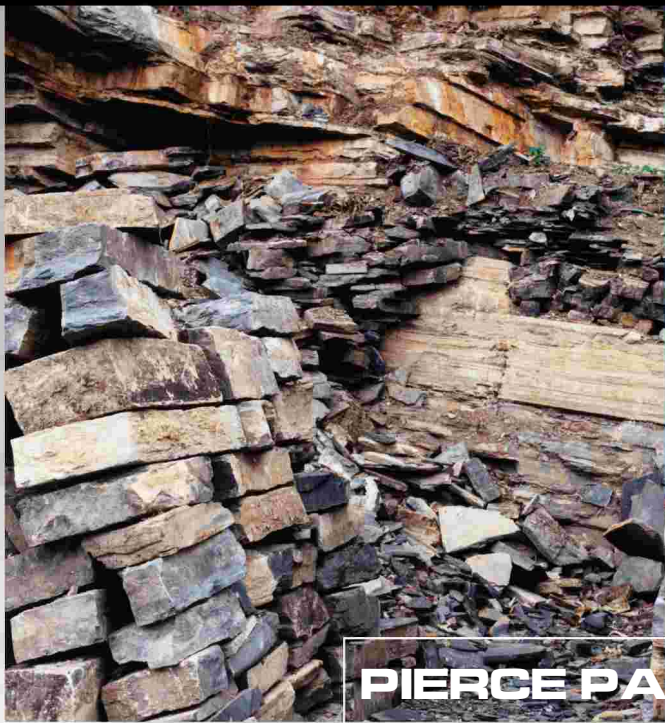


PIERCE PACIFIC MANUFACTURING, INC.



PIERCE PACIFIC MFG.

**MATERIAL
HANDLING**

**UNLOADING &
REHANDLING**



"PIERCE BUILT, PIERCE BACKED."

GREATER PRODUCTIVITY IS EASILY WITHIN REACH.

PIERCE PACIFIC MFG. MATERIAL HANDLING BOOMS.

OUR SPECIALTY: OPTIONS THAT WORK HARD TO MAKE YOUR JOB EASY.

Pierce Pacific Manufacturing material handling booms are the most efficient and reliable products on the market. We build material handling booms for a complete range of machines, from 20 up to 350 metric tonnes. Plus, Pierce delivers a product that fits your needs in the ways that matter most: the boom and work tool. By working with the latest modeling and FEA software, we are able to meet maximum design criteria, while maintaining overall weight control.

For scrap processing, refuse/transfer station or bulk material handling, Pierce Material Handling booms are ideal for piling, sorting, stockpiling and loading/unloading.

Pierce Material Handling booms are available for hydraulic excavators of every make, model and year. Mount it on a new or used machine, Pierce Material Handling booms can also be customized to suit your particular/unique applications.

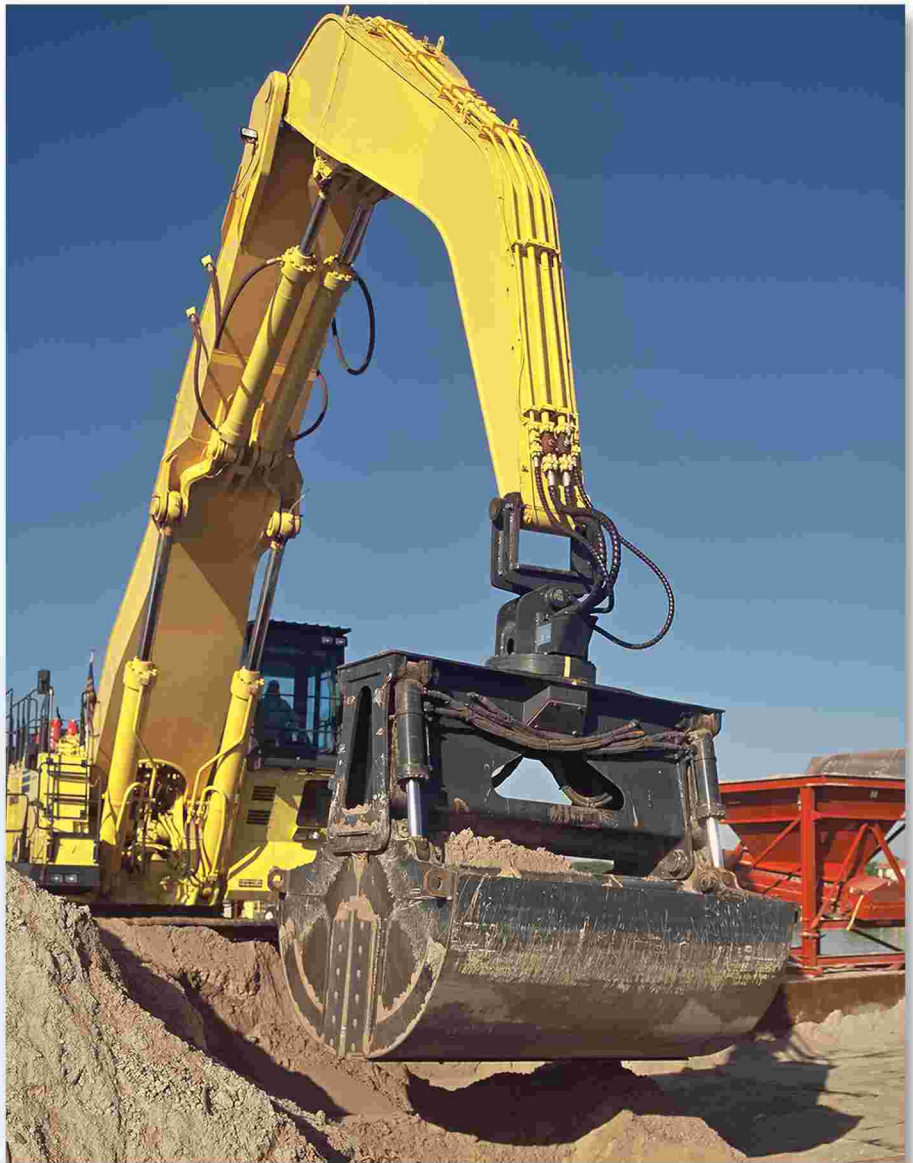
PIERCE PACIFIC MFG. CUSTOMIZED BOOM ADVANTAGE:

- Versatility to offer the best configuration for every application
- Increased reach and range
- Greater capacity
- Large pins and heavy duty joints extend service life
- Parflanged tubing and centralized lubrication
- Cab riser for better visibility and greater production
- Widened gauge for 360° stability
- Additional counterweight for increased capacity and stability
- Under-mount stick cylinder for greater lift capacity
- Side-mount stick cylinders also available
- Work tools designed for maximum productivity
- Pierce experience: OEM supplier of material handling booms

CUSTOM DESIGN MEANS THE RIGHT BOOM FOR THE JOB.

How do you need your boom configured? Straight, cambered, semi-cambered, droop nose, two piece, three piece, long, short or standard lengths — you name it. Grapple, clamshell, magnets or all three? Pierce will configure your machine to handle the job.

Many manufacturers offer one configuration to suit every application. However, one size doesn't fit all. Pierce analyzes all of the factors pertaining to your specific application, recommending the configuration which maximizes your production — and profitability.



FACTORS CONSIDERED:

- Material weight and density
- Material size and texture
- Cycle time and swing motion
- Critical working range-reach, depth, weight and capacity
- Building restrictions
- Existing installations
- Existing structures
- Existing work tools
- Safety regulations

PIERCE PACIFIC MANUFACTURING, INC.

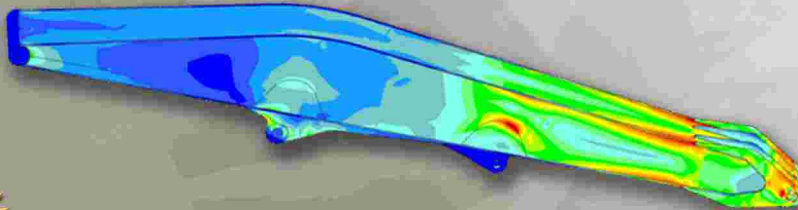
OTHER WORK TOOLS AVAILABLE FROM PIERCE PACIFIC MANUFACTURING.

Pierce Pacific Manufacturing also manufactures/supplies buckets, grapples, complete generator packages and other work tools with the same quality and precision that has built our reputation as a leader in the industry.



THE PIERCE PROMISE

Like all custom-built Pierce products, once it's delivered we stand by it all the way. Our unparalleled product support and customer service includes onsite training and troubleshooting, stocked warehouses, after hours pickup and emergency overnight delivery. Our professional service technicians are at your service 24 hours a day, every day, to make sure your jobs stay on track and on schedule. Quality from the drawing board to the bottom line. That's what "Pierce built, Pierce backed" is all about.



GET A PERFECT FIT WITH FINITE ELEMENT ANALYSIS

Finite Element Analysis (FEA), combined with computer-aided motion analysis software, allows for fully associative drafting which assures a precise fit of every part and component we fabricate. Simply put, Pierce is able to design, "build", assemble, simulate and test fabrications such as Material Handling booms, grapples and buckets before any manufacturing takes place. And, as an Allied Equipment Manufacturer, our engineering team works directly with excavator manufacturers to assure complete and error-free integration of all OEM/Pierce equipment.



Pierce Pacific Manufacturing, Inc.
Pierce Denharco, Inc.
4424 NE 158th
Portland, Oregon 97230 USA

Post Office Box 30509
Portland, Oregon 97294 USA

Telephone: 503.808.9110
Toll Free: 800.760.3270
Facsimile: 503.808.9111

3275 Choquette Blvd.
Units 9 & 10
Saint-Hyacinthe, Quebec
Canada J2S 7Z8

Toll Free: 800.363.1587
Facsimile: 450.773.2575

Distribution Warehouses
Edmonton, Alberta
Canada
Baton Rouge, Louisiana USA

www.piercepacific.com
www.denharco.com

PIERCE
Denharco