

PIERCE PACIFIC MANUFACTURING, INC.



PIERCE PACIFIC MFG.

**EXTREX
LONG REACH**

LONG REACH BOOMS



"PIERCE BUILT, PIERCE BACKED."

GREATER PROFITABILITY IS NOW WITHIN REACH.

PIERCE PACIFIC MFG. , OVER 20 YEARS EXPERIENCE WITH LONG REACH EXCAVATOR BOOMS.

Pierce Pacific EXTREX long reach excavator booms go where standard booms fear — or are simply unable! In fact, our EXTREX line ranges from 44' up to and exceeding 100', maximizing your reach from 60% to 100% greater than a standard excavator boom.

As a pioneer in designing, engineering and manufacturing long reach excavator booms, Pierce leads the industry in technological and functional advancements. When standard boom reach and depth run short, extend your excavator's reach and utility with a hard-working EXTREX boom.

EXTEND YOUR POSSIBILITIES, NO MATTER WHAT THE JOB.

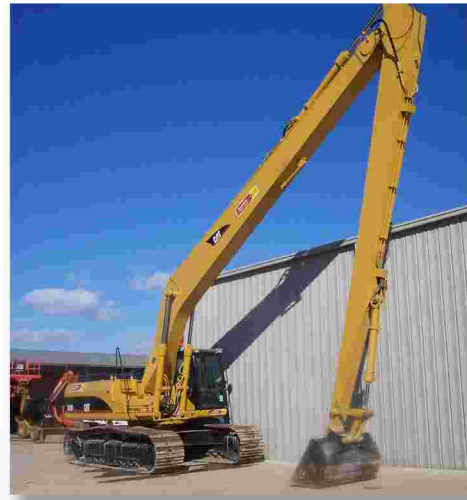
EXTREX long reach excavator booms fitting up to 45 metric tons are ideal for pond building and maintenance; sludge and settling pond cleanout; canal irrigation; construction; drainage; river conservation and remediation; dredging and deep foundation excavation. Special packages are available for cold weather, corrosive and rental applications.

PIERCE PACIFIC MFG. EXTREX LONG REACH EXCAVATOR BOOM ADVANTAGES:

- Extend your excavator's reach and utility
- Easy to operate hydraulic excavators outperform cable-operated drag lines
- Large pins and heavy-duty joints extend service life
- Pierce experience: OEM supplier of long reach boom
- Parflanged hydraulic tubing & centralized lubrication
- Choice of ditch cleaning, general and special purpose buckets available
- High strength, light weight buckets maximize available payload
- Custom configurations available

GET THE RIGHT EXTREX BOOM FOR THE JOB.

Pierce EXTREX Long Reach booms are available for hydraulic excavators of every make, model and year. Mount it on a new or used machine. Also, Pierce EXTREX booms can be customized to suit your particular/unique applications.



COMPLETE CUSTOMIZATION: THE PIERCE DIFFERENCE.

Many manufacturers offer one configuration to suit every application. However, one size doesn't fit all. Pierce analyzes all of the factors pertaining to your specific application, recommending the configuration which maximizes your production — and profitability.

FACTORS CONSIDERED:

- Material weight and density
- Material size and texture
- Cycle time and swing motion
- Critical working range-reach, depth, weight & capacity
- Building restrictions
- Existing installations
- Existing structures
- Existing work tools
- Safety regulations

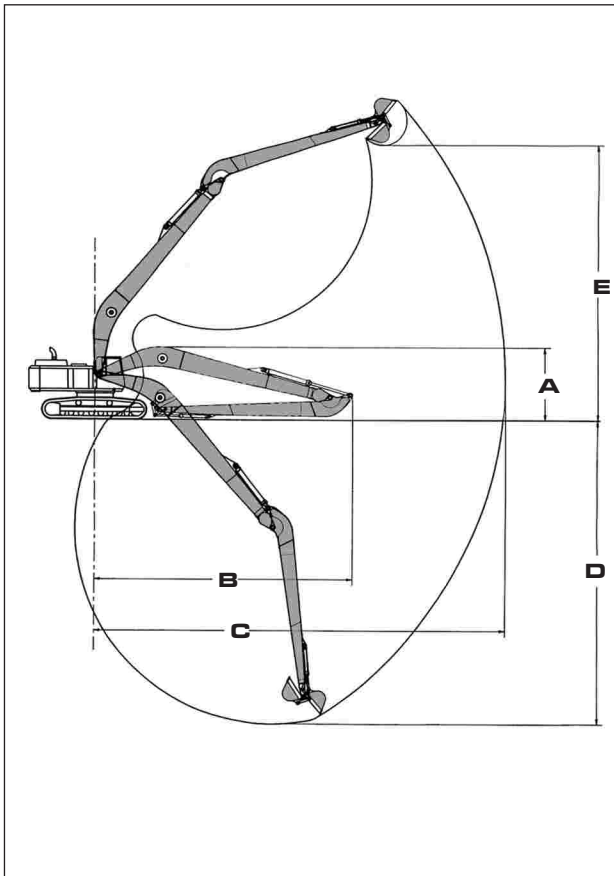
THE EXTREX PACKAGE INCLUDES:

- Main boom and stick section
- Stick cylinder
- Bucket cylinder and linkage
- All boom and stick plumbing
- Additional counterweight
- Choice of bucket sizes and styles

THE EXTREX PACKAGE REQUIRES:

- Standard excavator boom hoist cylinders
- Standard machine to boom hydraulic hoses
- Boom foot pin





15-45 M.T. MACHINES SPECIFICATIONS

MACHINE SIZE	EXTREX MODEL	REACH	WEIGHT	A	B	C	D	E	DITCH CLEANING BUCKET 60"	GENERAL PURPOSE BUCKET
15-18 M.T.	LR 2/44	44'	6,800#	9'8"	29'1"	45'2"	37'4"	35'0"	.759	.625
20-21 M.T.	LR 2/50	50'	7,100#	10'1"	33'2"	51'2"	38'9"	36'8"	.759	.625
22-25 M.T.	LR 2/60	60'	8,800#	10'6"	39'0"	61'2"	48'6"	38'9"	.759	.625
	LR 3/55	55'	10,200#	10'11"	35'4"	56'	45'2"	39'6"	.937/1.33	.750
27 M.T.	LR 2/60 H.D.	60'	11,170#	10'6"	39'0"	60'2"	45'0"	43'9"	.759	.625
29 M.T.	LR 3/55	55'	10,200#	10'11"	35'4"	56'10"	39'1"	44'	1.33	.750
	LR 3/60	60'	13,000#	11'1"	39'1"	61'2"	51'5"	35'	1.33	.750
30-33 M.T.	LR 3/55	55'	10,800#	10'11"	35'4"	55'7"	44'11"	37'4"	1.50	.750
	LR 3/60	60'	13,000#	11'6"	39'1"	60'6"	47'7"	38'5"	1.33	.750
	LR 3/65	65'	13,500#	12'	41'9"	64'9"	48'5"	45'11"	1.0	.750
40-46 M.T.	LR 4/50	50'	17,000#	12'9"	33'9"	50'3"	38'6"	30'1"	2.75	2.25
	LR 4/55	55'	17,400#	12'9"	37'5"	58'1"	41'11"	36'9"	2.50	2.00
	LR 4/60	60'	18,000#	12'8"	39'7"	60'10"	46'4"	37'7"	2.28	1.50
	LR 4/65	65'	18,880#	12'11"	42'1"	66'3"	48'7"	37'7"	1.33	.750
	LR 4/70	70'	20,600#	13'9"	43'2"	70'3"	56"	40'6"	1.0	.750

H.D.= Heavy Duty Specifications may change depending upon machine make and model.

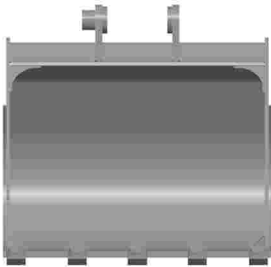
50-120 M.T. MACHINES SPECIFICATIONS

MACHINE SIZE	MEGA EXTREX MODEL	REACH	DEPTH
50-60 M.T.	LR 6/60	60'	42'
70-80 M.T.	LR 7/60	60'	46'
70-80 M.T.	LR 7/70	70'	53'
70-80 M.T.	LR 7/80	80'	61'
100-120 M.T.	LR 11/80	80'	59'
100-120 M.T.	LR 11/100	100'	81'
100-120 M.T.	LR 11/105	105'	86'

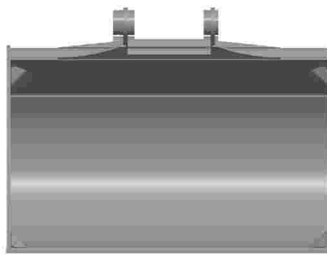
M.T.= metric tonnes

WHY PIERCE PACIFIC MFG. BUCKETS?

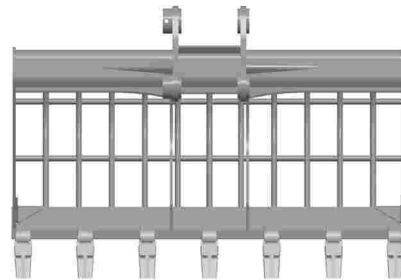
Specifically designed to work with Pierce Pacific Manufacturing EXTREX Long Reach Booms, and designed to optimize strength-to-weight ratio. Each bucket is fabricated utilizing high-strength steel resulting in a light weight bucket, maximizing load capacity.



GENERAL PURPOSE



DITCH CLEANING



AQUATIC WEED



TUFFY PLUMBING



- Parflanged Hydraulic Tubing.
- Eliminates pin hole leaks at tube fittings.
- Forms flanges to the tube, instead of welding fitting/tube ends.
- Tubes cycled over 1 million times, minimizing failures.
- Centralized lubrication location makes maintenance quick and easy, while increasing component life.



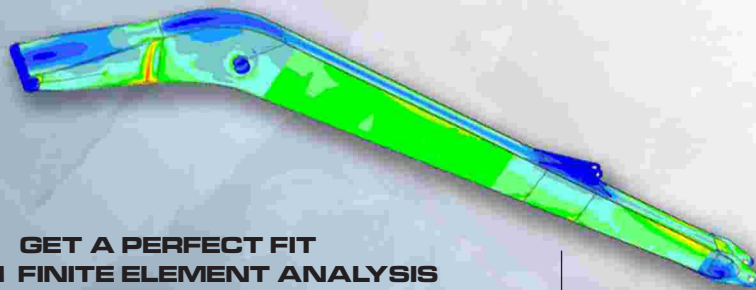
THE RENTAL FLEET ADVANTAGE

Attract new customers and increase rental fleet profits by offering long reach machines equipped with a Pierce EXTREX boom. The "HD" model Pierce EXTREX boom is designed to withstand the rigors of rental fleet use for the popular 25-27M.T. size.

Pierce EXTREX Boom Models: LR2, LR3, LR4 utilize standard transport. For 70' and beyond, see Pierce Mega EXTREX Booms, the super long reach boom.

THE PIERCE PROMISE

Like all custom-built Pierce products, once it's delivered we stand by it all the way. Our unparalleled product support and customer service includes onsite training and troubleshooting, stocked warehouses, after hours pickup and emergency overnight delivery. Our professional service technicians are at your service 24 hours a day, every day, to make sure your jobs stay on track and on schedule. Quality from the drawing board to the bottom line. That's what "Pierce built, Pierce backed" is all about.



GET A PERFECT FIT WITH FINITE ELEMENT ANALYSIS

Finite Element Analysis (FEA), combined with computer-aided motion analysis software, allows for fully associative drafting which assures a precise fit of every part and component we fabricate. Simply put, Pierce is able to design, "build", assemble, simulate and test fabrications such as EXTREX booms and buckets before any manufacturing takes place. And, as an Allied Equipment Manufacturer, our engineering team works directly with excavator manufacturers to assure complete and error-free integration of all OEM/Pierce equipment.



Pierce Pacific Manufacturing, Inc.
Pierce Denharco, Inc.
4424 NE 158th
Portland, Oregon 97230 USA

Post Office Box 30509
Portland, Oregon 97294 USA

Telephone: 503.808.9110
Toll Free: 800.760.3270
Facsimile: 503.808.9111

3275 Choquette Blvd.
Units 9 & 10
Saint-Hyacinthe, Quebec
Canada J2S 7Z8

Toll Free: 800.363.1587
Facsimile: 450.773.2575

Distribution Warehouses
Edmonton, Alberta
Canada
Baton Rouge, Louisiana USA

www.piercepacific.com
www.denharco.com

PIERCE
Denharco