




Pierce Pacific Manufacturing, Inc.
Pierce Denharco, Inc.

PIERCE
Denharco

Felling Attachments



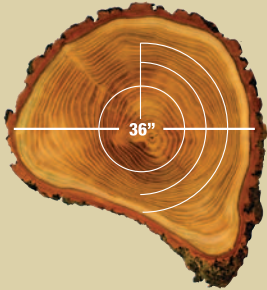
PBS 3440 BAR SAW



PBS 3440 BAR SAW

You asked for it, you've got it! A heavy-duty bar saw built to cut big timber and built to last with greater strength, stronger durability and larger cutting capacity. A heavy-duty frame consisting of a strong, simple structure eliminates the need for reconditioning. And, you can forget about needing structural reinforcements prior to your first cut. This saw is ready for work right out of the box.

The **PBS 3440** is stronger, safer and more productive than competitive disk-style saws. In lieu of cutting before grabbing the stem, the **PBS 3440** grabs the tree first, then cuts... a significant safety advantage on steep slopes. And there is only one saw on the market capable of a 3' single pass cutting capacity: the **PBS 3440**. This means no more wasted time double and triple cutting. Also, cutting a straight, square butt eliminates that extra step with the processor, saving you time while maximizing production with your processor. Reverse cutting and no recovery time, as well as minimal maintenance, less demand for handfallers and less fuel consumption makes the **PBS 3440** a cut above anything out there.



Pierce Pacific Manufacturing, Inc.
Pierce Denharco, Inc.

4424 NE 158th
Portland, Oregon 97230 USA

Post Office Box 30509
Portland, Oregon 97294 USA

Telephone: 503.808.9110
Toll Free: 800.760.3270
Facsimile: 503.808.9111

Distribution Warehouses
Edmonton, Alberta Canada
Jackson, Mississippi USA

www.piercepacific.com
www.denharco.com



Denharco



SPECIFICATIONS	PBS 3440
CUTTING CAPACITY	36"
ARM OPENING	39.5"
LATERAL TILT: Standard	40°
LATERAL TILT: Optional	350°
HEIGHT	99"
WIDTH	66"
OVERALL WEIGHT	4,780 LBS.
INCLUDES BOOM ADAPTER & 40° LATERAL TILT	
SAW OIL TANK	3.5 GALLON
CARRIER REQUIREMENTS	
HYDRAULIC REQUIREMENTS	3,600-5,000PSI
FLOW	50-75 GPM
CARRIER WEIGHT	60,000LB-82,000LB

FEATURES	PIERCE BAR SAW	COMPETITIVE HOT SAW	COMPETITIVE INTERMITTENT SAW
SINGLE PASS CUTTING CAPACITY	36"	22" - 24"	22" - 29"
WEIGHT	4,780lb.	6,500-6,950lb.	5,300-6,600lb.
FIRE RISK	LOW	HIGH	MEDIUM
OPERATIONAL COSTS	\$	\$	\$
RELATIVE PRICE	\$	\$\$	\$\$\$

NOTE: Specifications reflect all saws equipped with 40° lateral tilt.

PIERCE BAR SAW FEATURES:

GENERAL

- "Grab-then-cut" sequence offers greater safety with superior stem control, particularly on steep slopes.
- Greater production & faster cutting than intermittent-style saws.
- Designed to cut big timber, and made to last.
- Less demand for handfallers.
- Less deterioration on feller buncher equals decreased operational costs & fuel consumption.

FRAME

- Heavy duty frame eliminates need for reconditioning.
- No need for structural reinforcements.
- Stem tower assures superior log control, as well as reduces excessive loading on arms.
- Tree shelf minimizes slippage by securing butt of the tree.

SAW SYSTEM

- Spring mounted saw system.
- Full speed, powered saw return.
- Cut straight, square butt eliminating extra step with processor.
- No saw recovery time needed.

ARMS

- Heavy duty cast arms offer superior strength in big wood felling applications.
- (3) 4" independent arm cylinders offer maximum tree control.

PINS & BUSHINGS

- Oversized, induction hardened, heat treated, and chromed pins.
- Aluminum bronze bushings for extended lubrication/greasing intervals.

HYDRAULIC SYSTEM

- Centralized hydraulics are fully enclosed for maximum operational protection.

ROTATION

- Standard tilt: 40°
- Optional tilt: 350°



THE PIERCE PROMISE

Like all Pierce products, once it's delivered we stand by it all the way. Our unparalleled product support and customer service includes on-site training and troubleshooting, stocked warehouses, after hours pickup and overnight delivery. Emergency orders are routinely shipped the same day, and our professional service technicians are available 7 days a week, after business hours and weekends, to make sure your jobs stay on track and on schedule. Quality from the drawing board to the bottom line. That's what "Pierce built, Pierce backed" is all about.

